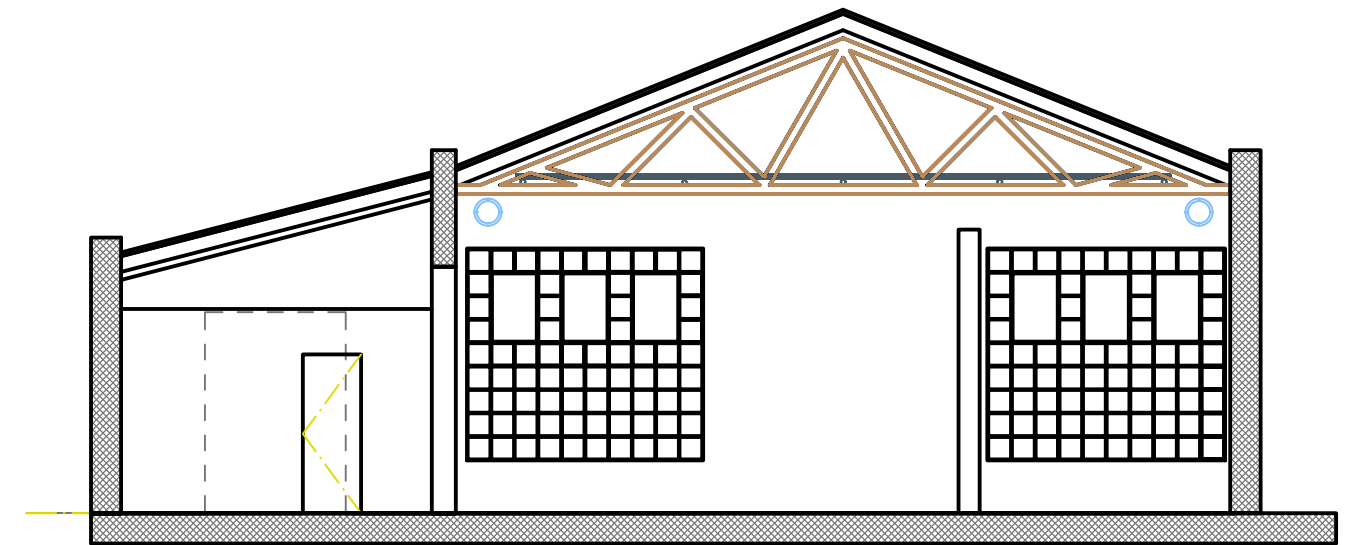
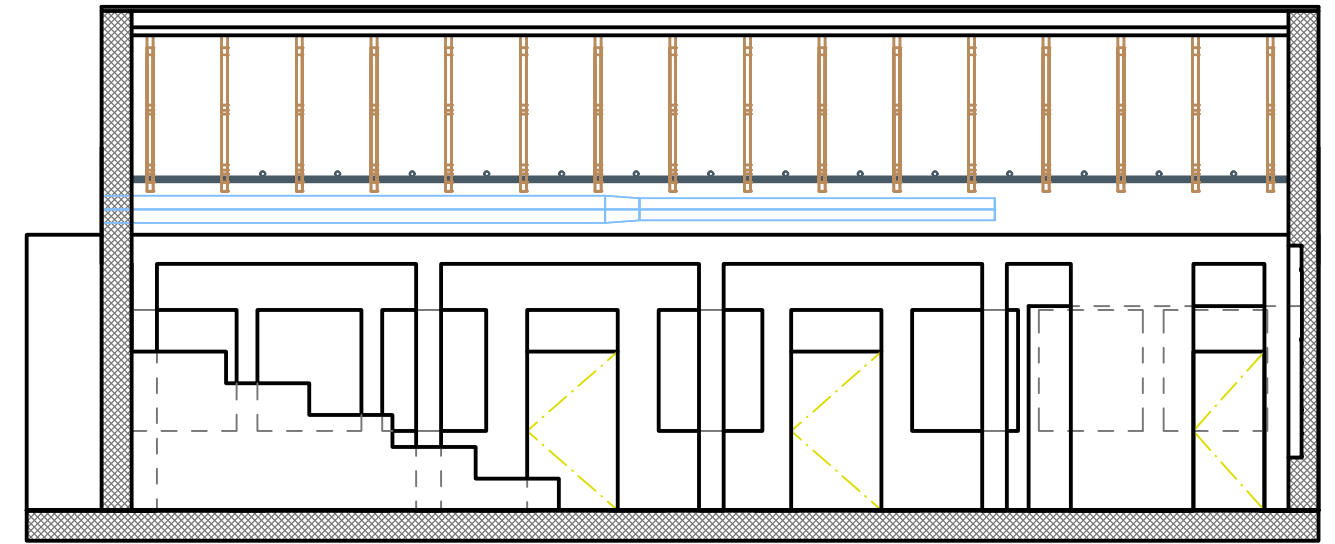
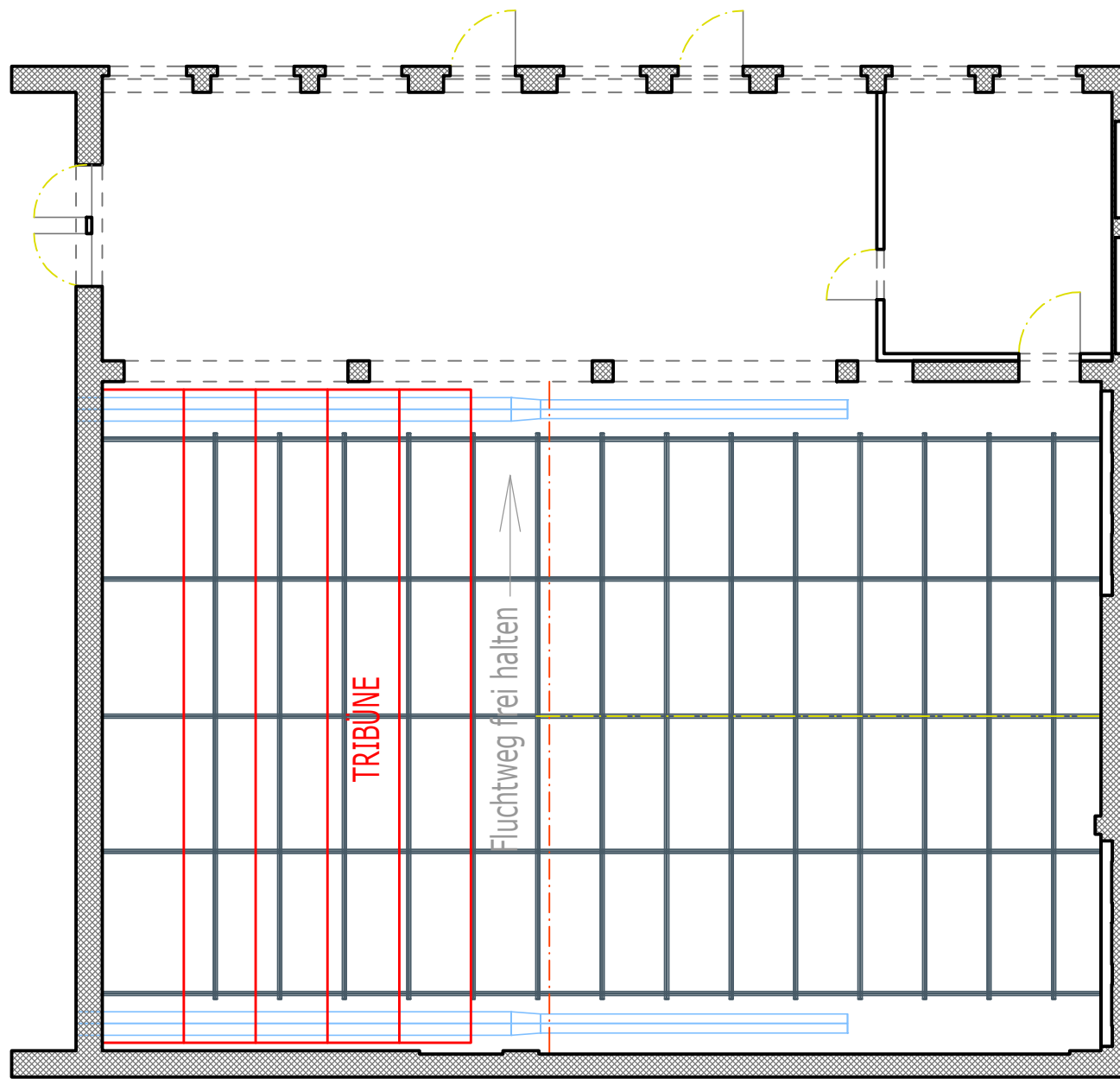
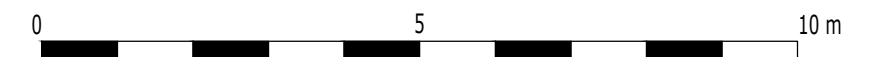


Stüchtitel

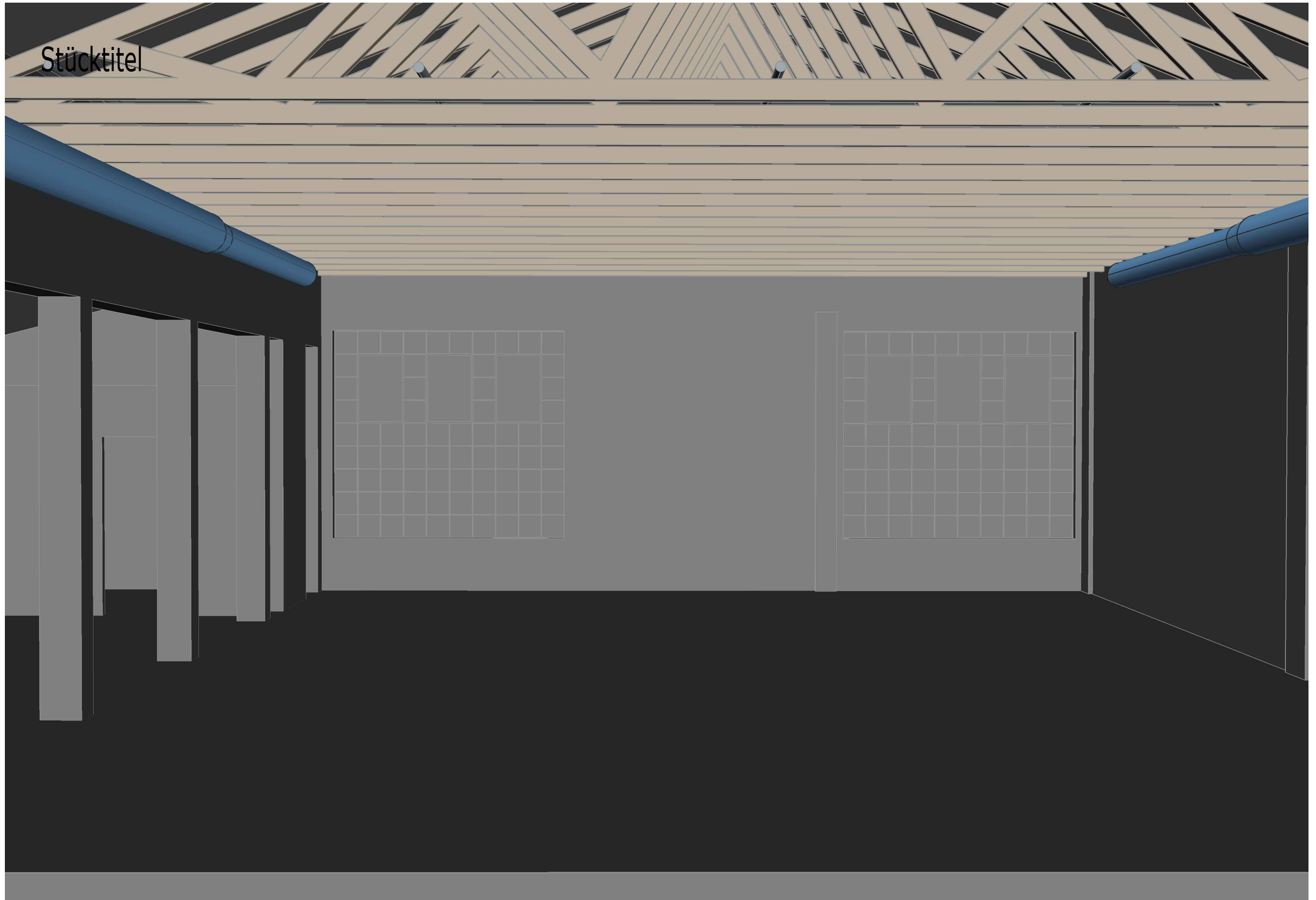


| | | | |
|---|-------------------------------------|----------------------------------|---|
| Objekt: Rote Fabrik Fabriktheater | | | Rote Fabrik Seestrasse 395 Postfach 1073 8038 Zürich |
| Schnitte: Grundriss und Schnitte | | | |
| Masstab: 1: 100 | Datum: 12 Dez. 2018/13:38 | 01 | |
| Format: A 3 | Gezeich.: dh | CAD-Format: AutoCAD 17 | |

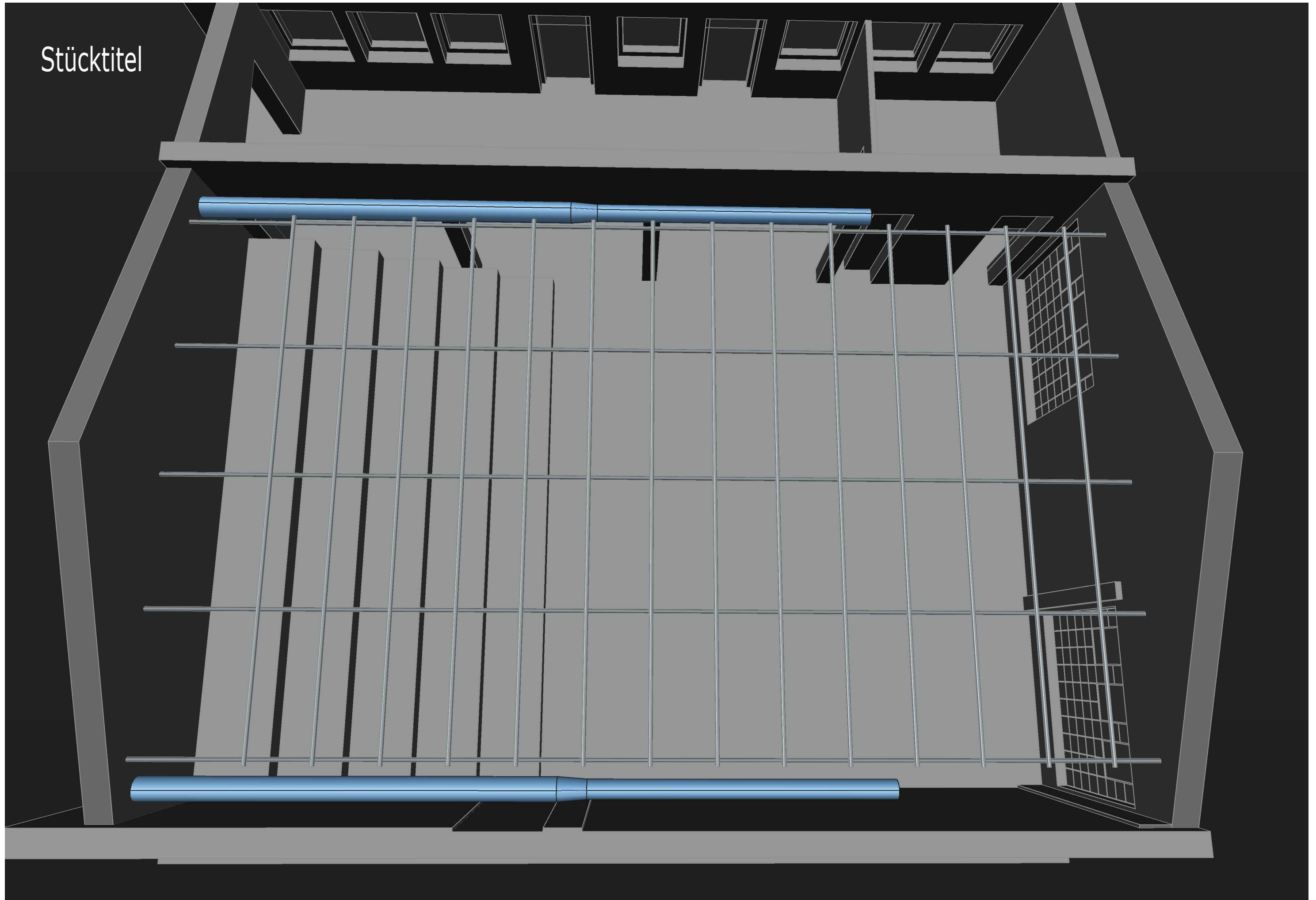
M 1: 100
12 Dez. 2018/13:38 dh



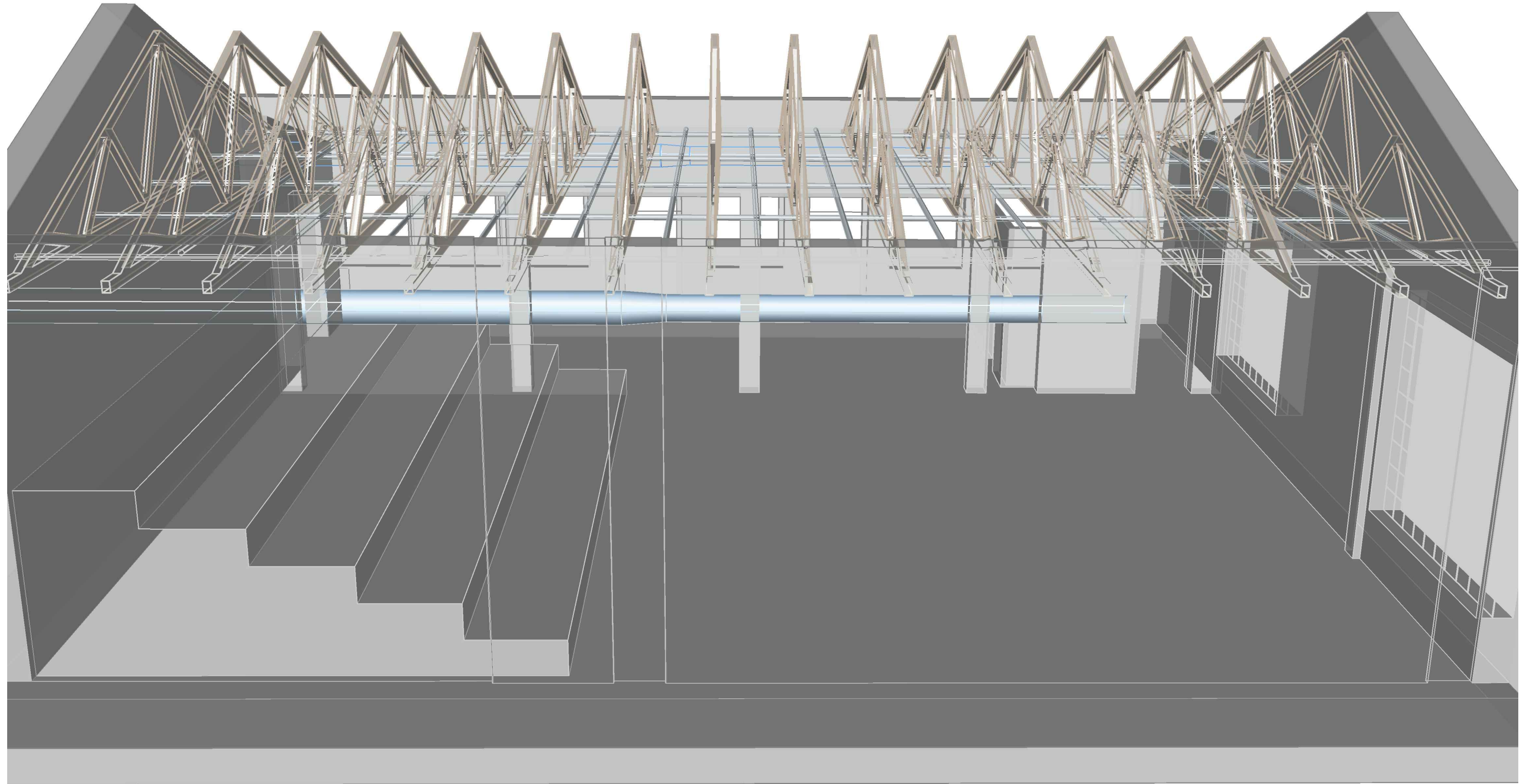
Stücktitel

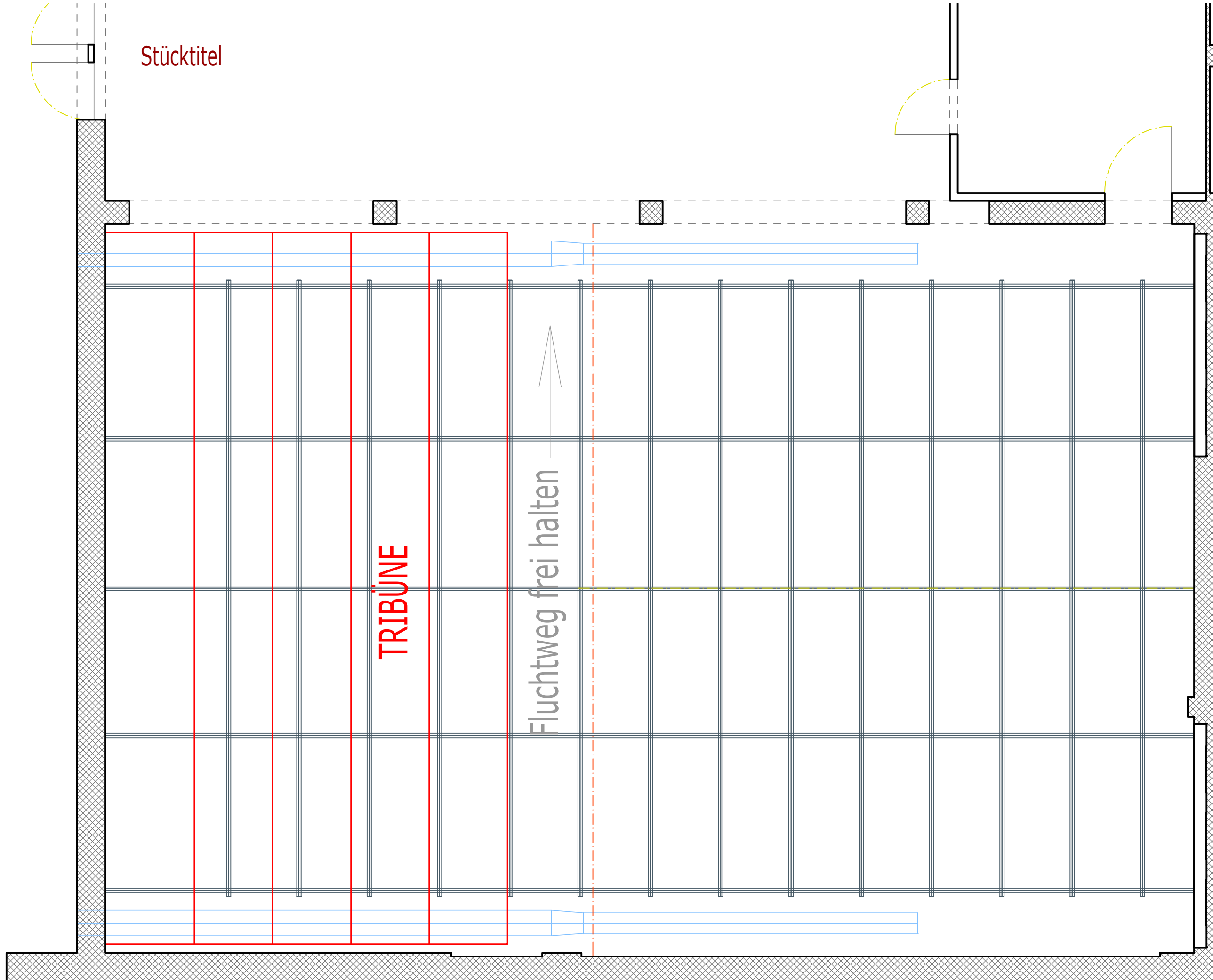


Stüctitel



Stückeritel





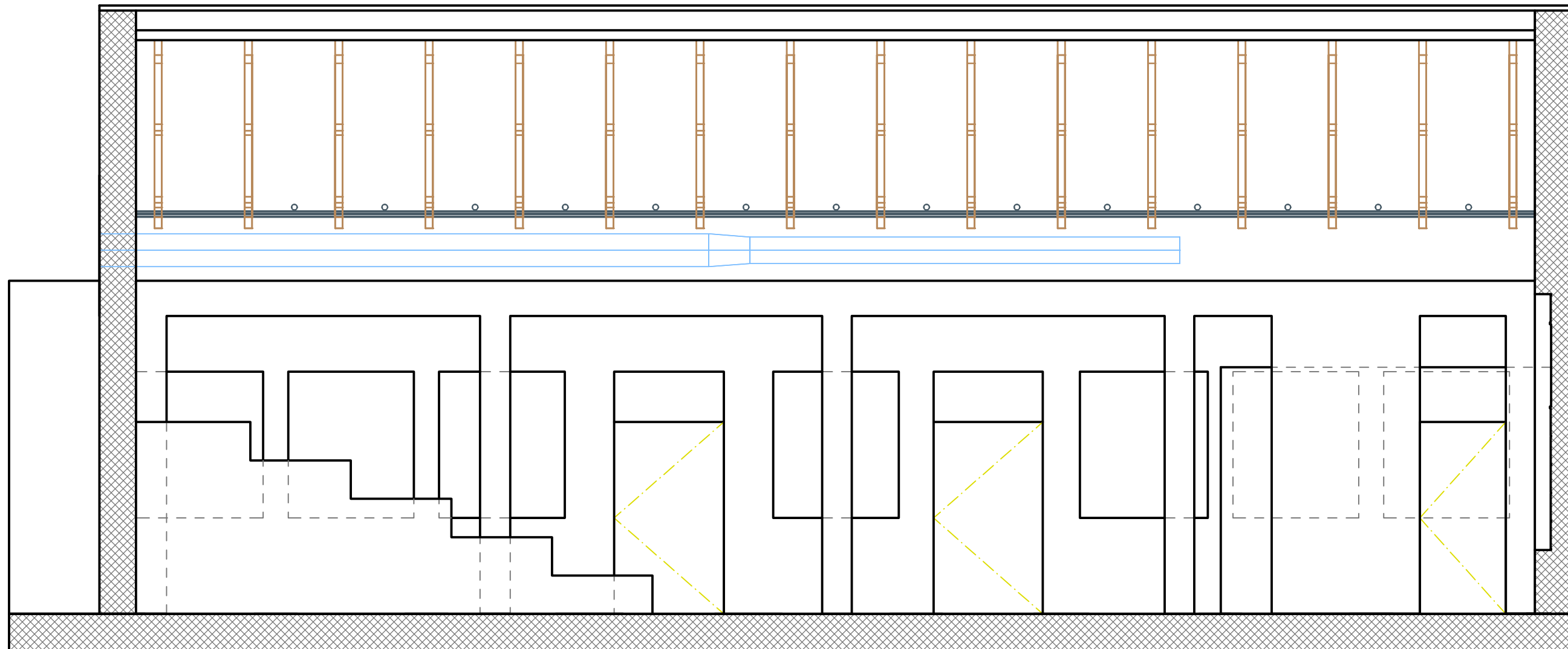
Stüchtitel

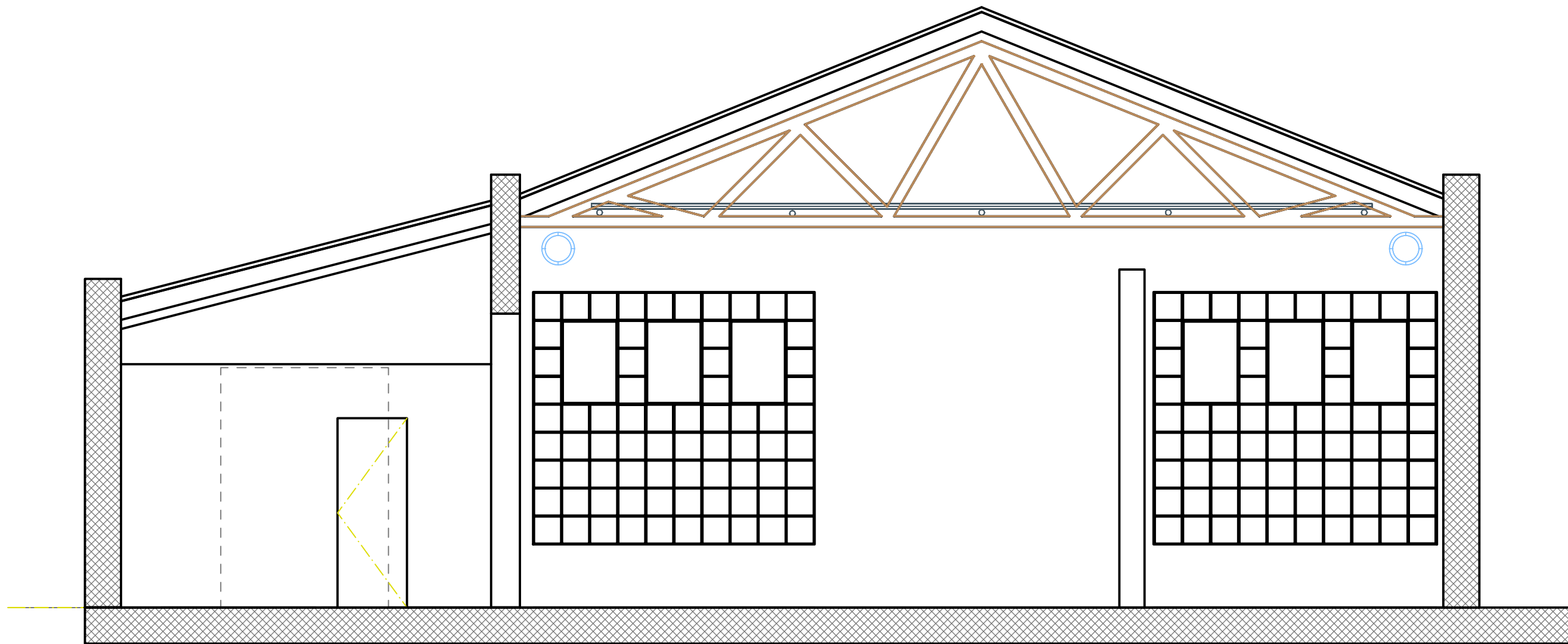
TRIBÜNE

Fluchtweg frei halten

Grundriss

M 1: 50
12 Dez. 2018/13:12 dh





Ansicht

M 1: 50

12 Dez. 2018/13:12 dh