

Clubraum Soundspecs

Public Address & FoH

Mixing Desk	1	Soundcraft Vi6
PA System	6	Meyer Sound JM1-P
	3	Meyer Sound 700-HP cardioid subarray
	1	Meyer Sound UPJ1-P centre fill
Side Rack	1	CD Player / Flash player
Signal Processing	1	Dolby Lake Processor LP4D12Z with Lake Controller on wireless tablet PC

Monitoring

Mixing Desk	1	Soundcraft SM 20 Monitor 40/20/2
Monitors	8	SM 400
Drum Fill	1	KF 600
	1	SB 250
Side Rack	1	Lexicon PCM 70
	1	Yamaha SPX 90
	2	4 channel BSS DPR 504 Gates
	2	4 channel BSS DPR 404 Compressor
	1	2 channel BSS DPR 402 Compressor
EQs	1	TC EQ Station 8 w/ Motofader-64
Mics	1	AKG D 112
	2	AKG C 451
	2	AKG HM1000 CK32/CK33
	4	EV RE 20
	2	EV RE 27/ND
	4	Neumann KM 184
	1	Neumann KMS 105
	6	Sennheiser 421
	4	Sennheiser 441
	6	Sennheiser e904
	4	Sennheiser e906
	1	Sennheiser e935
	1	Sennheiser e945
	1	Shure SM 7B
	2	Shure Beta 52
	4	Shure Beta 56
	10	Shure SM 57
	2	Shure Beta 57A
	10	Shure SM 58
	2	Shure Beta 58A
	2	Shure SM 81LC
	4	Shure SM 87
	2	Shure Beta 91
	4	Shure SM 98
	2	Shure KSM 32
	2	Shure KSM 137
	6	Shure UHF - Wireless SM 58 or SM 87
	4	2x Bodypack, 2x WL - 50, 2x SM 54
	2	AKG C 562 EB
DIs	25	Active DI boxes
	3	Passive DI boxes
	1	Palmer PMS - 02 Microphone Splitter
	1	Palmer PLS - 02 Line Splitter

Contact

Franziska Rütimann / Christian Frick
sound@rotefabrik.ch
Tel: +41 (0)44 485 58 18
Fax: +41 (0)44 485 58 19

Clubraum Lightspec's

Light Desk	1	Avolite Tiger Touch	
Dimmer	1	Avolite ART2000 T4 48 Channels	
Back Truss	4	6 - bar PAR 64 CP62	1000 W
	4	PAR 64 CP62	1000 W
	2	2 x 4 - bar PAR 64 ACL	2000 W
	4	ETC Profile 36°	575 W
	4	PAR 64 short CP62	1000 W
	4	Coloram II Scrollers, DMX	
Front Truss	4	Par 64 CP62	1000 W
	4	Spotlight Profile 25 - 50°	1000 W
	4	Strand PC	1200 W
Floor	4	Par 64 CP62	1000 W
	1	2 x 4 - bar PAR 64 ACL	2000 W
Moving Heads	8	GLP Volkslicht	180 W
	4	Martin Mac550	400 W
Disco Lights	6	Clay Paky Miniscan HPE, DMX	250 W
	4	Martin Mac250 Entour	250 W
Miscellaneous	1	Tour Hazer, DMX	

Contact

Jasmin Phasuk / Patrik Rimann / Tina Bleuler
light@rotefabrik.ch
Tel: +41 (0)44 485 58 18
Fax: +41 (0)44 485 58 19

Clubraum Stagespecs

Stage dimensions (standard-Situation)

Clubraum: 8m wide x 6m deep; clearance to Rigg: upstage: 3.65m / downstage: 3.25m

Stages & Risers (for all Rooms):

System Nüssli Combistage
12 Risers, System Büttec (100x200cm / 30/50/80cm high)
Risers, Wood (150x75cm / 30/50cm high)
Various black Backdrops, Curtains, Drapes etc.

Floors, Carpets, Folding Screens:

Black Dancefloor
Various Carpets
Folding Screen System 2m high, totally 12m wide

Projection: (on request. Will be charged separately!)

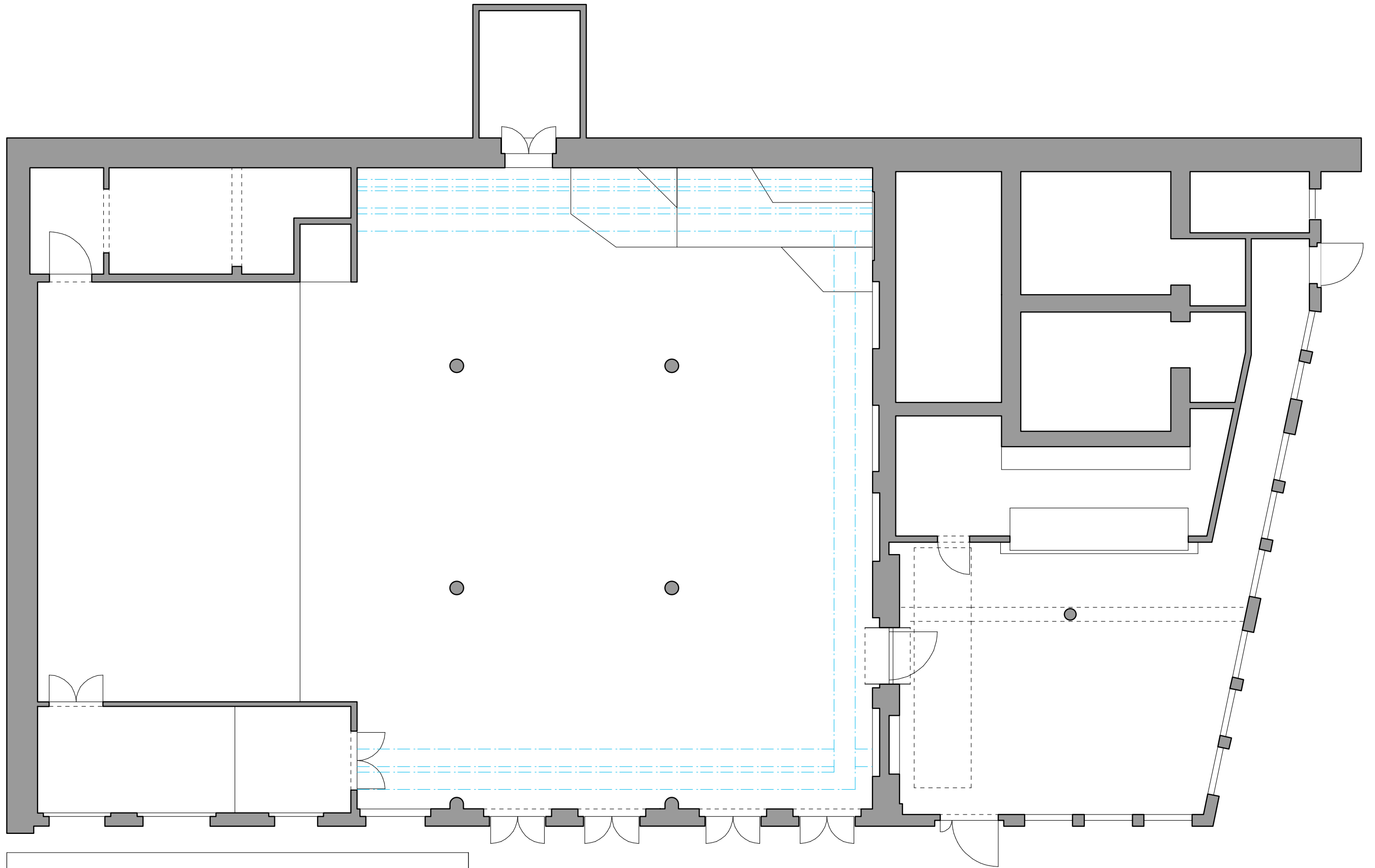
1 S-VHS Video Player/Recorder
4 DVD-Player
1 Tv-One C2-7110 Video Processor/Switcher
1 35mm Film Projector Rangertone with various Lenses
1 1x 16 mm Film Projector Elmo CX 350
2 Kodak Carousel Slide Projector with various Lenses & Remote Control
1 TV-Monitor Panasonic, Stereo, 68 cm
1 TV-Monitor Panasonic, Stereo, 51 cm
1 Digital Projector Epson EMP 1715
1 Digital Projector Epson EB 1720
2 Digital Projector Epson EMP 1810
1 Digital Projector NEC NP 3150
1 1x Digital Projector HP XP8010
1 Overhead Projector
2 Da-Lite Fast Fold Projection Screen 203x310cm
2 Da-Lite Fast Fold Projection Screen 310x417cm
1 Roll Screen 150x150cm

Specials: (on request. Will be charged separately!)

Grand Piano Yamaha S-400B, length: 190cm

Contact

Fränzi Keller / Roger Studer
stage@rotfabrik.ch
Tel: +41 (0)44 485 58 18
Fax: +41 (0)44 485 58 19



Clubraum Rote Fabrik

Grundriss

Massstab	Datum
1:100	25.05.2011

Papierformat
A3

IG Rote Fabrik
Technik
Seestrasse 395
8038 Zürich
Tel.
e-Mail

