

Fabriktheater Soundspecs

Mixing Desk	1	Soundcraft K1 20/6
PA System	8	Meyer Sound UP Junior
	2	Meyer Sound UMS1-P
Side Rack	1	Sony CD / MD Player
	1	BSS Soundweb London BLU-100/BOB-100
	1	BSS FCS - 966 Opal GEQ
	1	2 channel Behringer Compressor
	1	Behringer Multieffect processor

Contact Franziska Rütimann / Christian Frick
sound@rotefabrik.ch
Tel: +41 (0)44 485 58 18
Fax: +41 (0)44 485 58 19

Fabriktheater Lightspec's

Light Desk	1	ETC Express 250, DMX	
Dimmer	2	LSC 24 Channel, DMX	
PC	20	Selecon Rama	1200 W
	2	Strand Quartet	650 W
Fresnel	10	Selecon Rama	1200 W
Profile	8	ETC S4 Zoom 25 - 50°	750 W
	2	Strand Quartet 22 - 40°	650 W
Par	12	Par 64 CP60 / CP61 / CP62	1000 W
Floodlights	6	Selecon Lui asym.	1000 W

Contact

Jasmin Phasuk / Patrik Rimann / Tina Bleuler

light@rotefabrik.ch

Tel: +41 (0)44 485 58 18

Fax: +41 (0)44 485 58 19

Fabriktheater Stagespecs

Stage dimensions (standard-Situation)

Fabriktheater: 10mwide x 9.75m deep; Clearance to Rigg: 4.34m

Stages & Risers (for all Rooms):

- 12 Risers, System Büttec (100x200cm; 30 / 50 / 60-100cm high)
- Risers, Wood (150x75cm; 30 / 50cm high)
- Various black Backdrops, Curtains, Drapes etc.

Floors, Carpets, Folding Screens:

Black Dancefloor
Various Carpets
Pavatex-Floor for all Stages
Folding Screen System 2m high, totally 12m wide

Projection: (on request. Will be charged separately!)

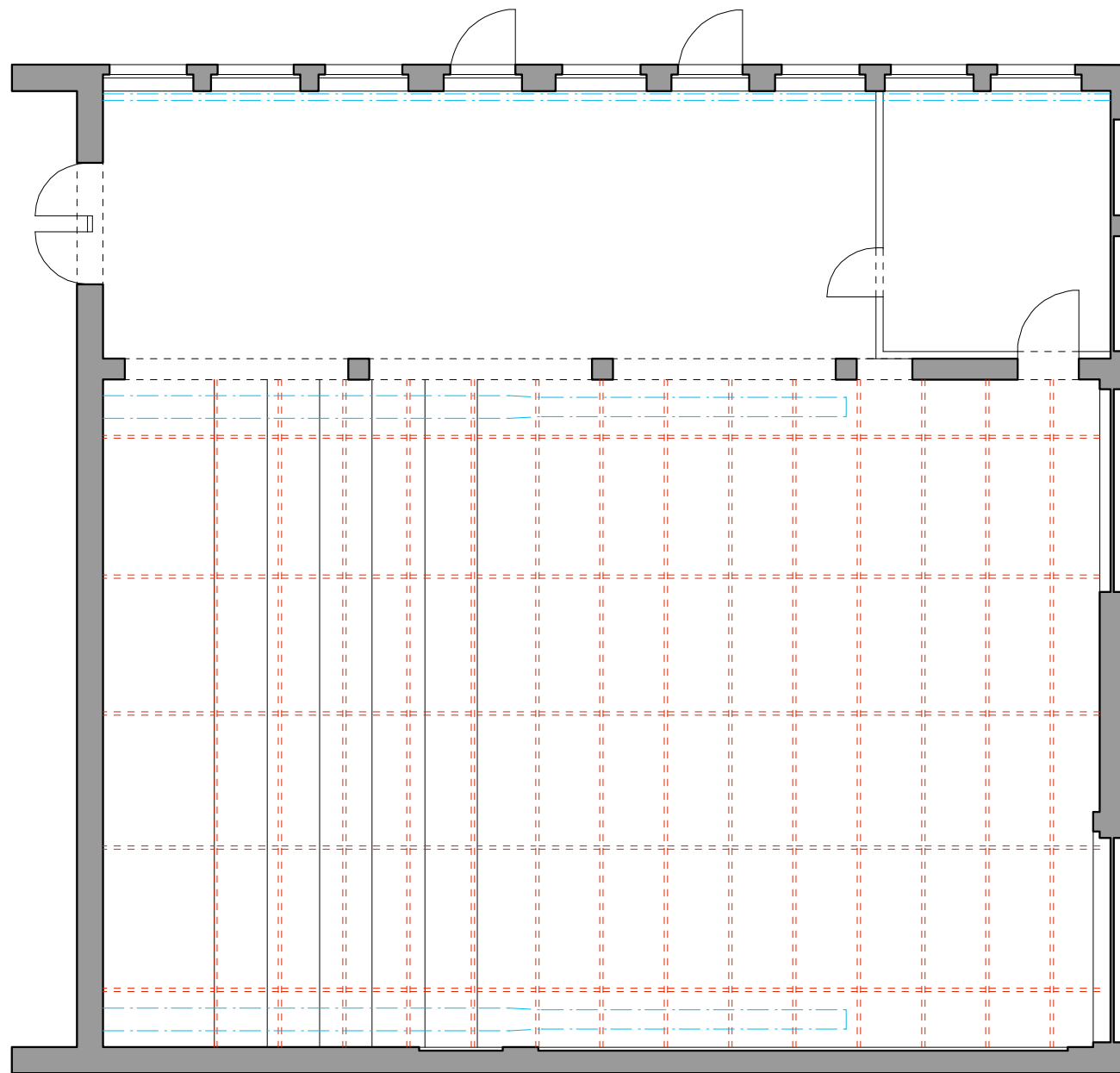
- 1 S-VHS Video Player/Recorder
- 4 DVD-Player
- 1 Tv-One C2-7110 Video Processor/Switcher
- 1 35mm Film Projector Rangertone with various Lenses
- 1 1x 16 mm Film Projector Elmo CX 350
- 2 Kodak Carousel Slide Projector with various Lenses & Remote Control
- 1 TV-Monitor Panasonic, Stereo, 68 cm
- 1 TV-Monitor Panasonic, Stereo, 51 cm
- 1 Digital Projector Epson EMP 1715
- 1 Digital Projector Epson EB 1720
- 2 Digital Projector Epson EMP 1810
- 1 Digital Projector NEC NP 3150
- 1 1x Digital Projector HP XP8010
- 1 Overhead Projector
- 2 Da-Lite Fast Fold Projection Screen 203x310cm
- 2 Da-Lite Fast Fold Projection Screen 310x417cm
- 1 Roll Screen 150x150cm
- 1 Opera Projection Screen; greyblue; 900 x 415cm

Specials: (on request. Will be charged separately!)

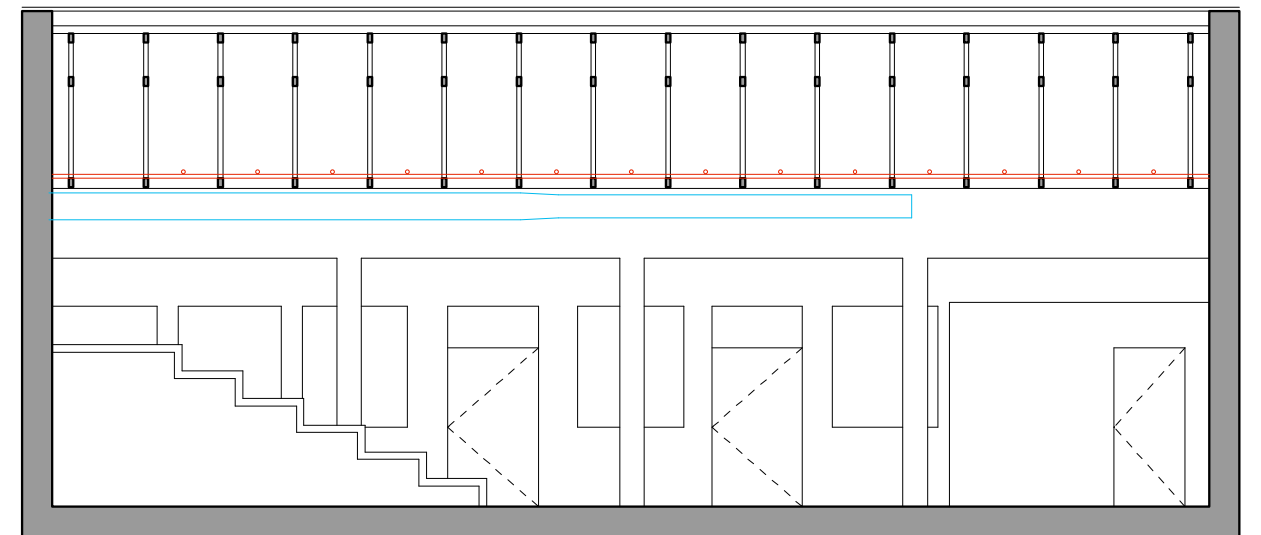
- 1 Grand Piano Yamaha S-400B, length: 190cm

Contact

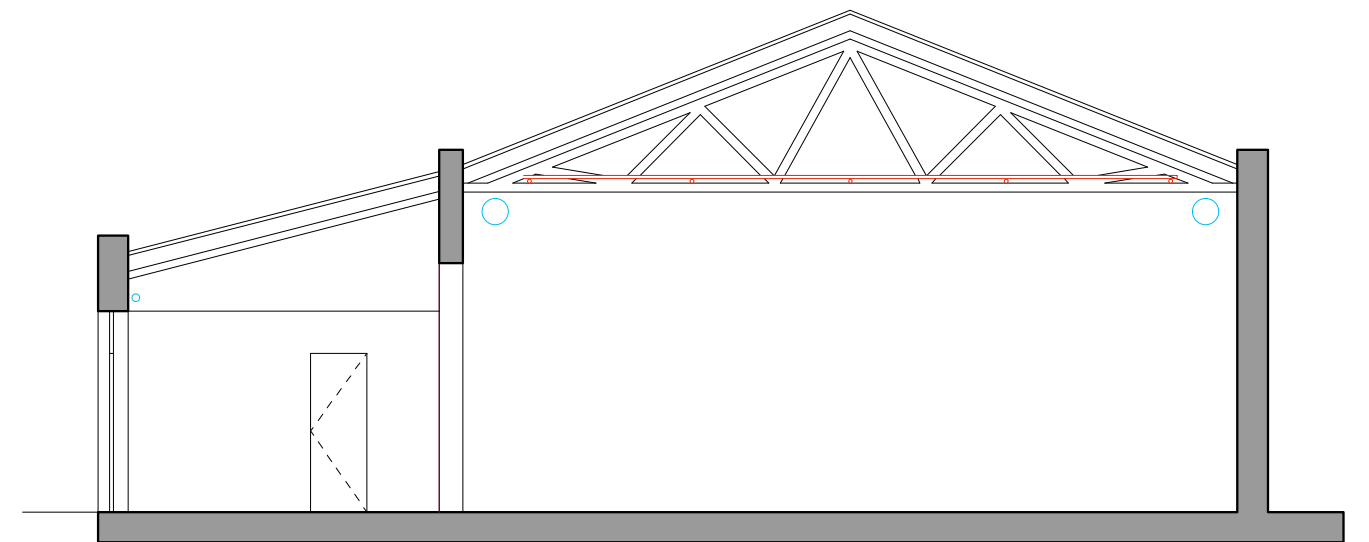
Fränzi Keller / Roger Studer
stage@rotfabrik.ch
Tel: +41 (0)44 485 58 18
Fax: +41 (0)44 485 58 19



Grundriss



Längsschnitt



Querschnitt

Fabriktheater Rote Fabrik		
Grundriss / Schnitte		IG Rote Fabrik Technik Seestrasse 395 8038 Zürich Tel. : Mail :
Massstab 1:100	Datum 25.05.2011	
Papierformat A3		

